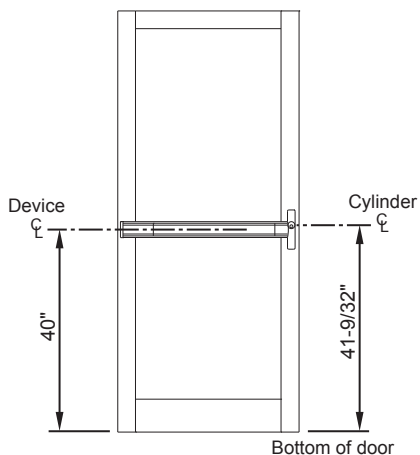
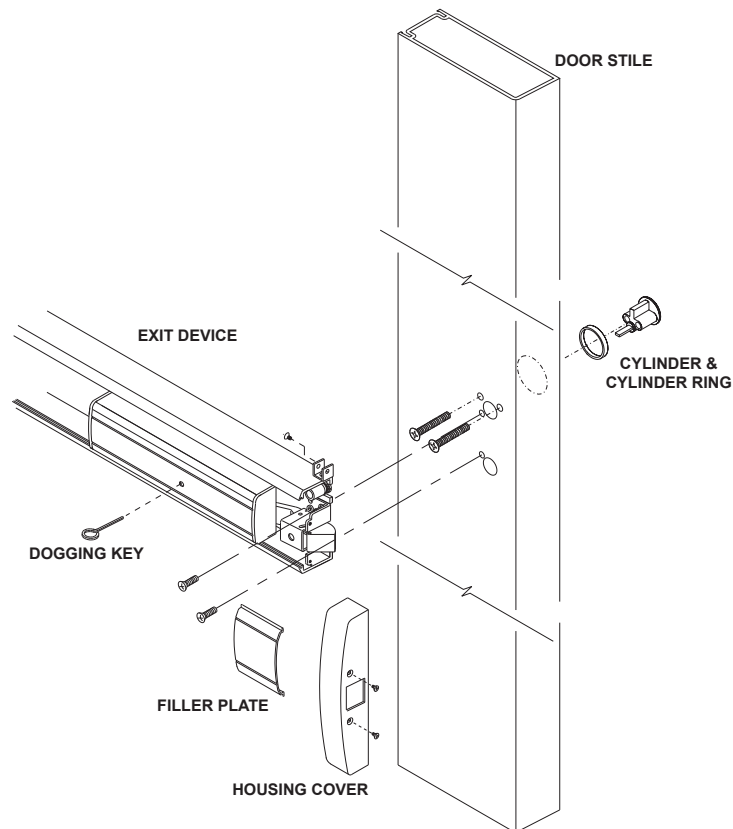


**Note:** Any modification of the Exit Device done in the field shall void the warranty of the product. Kawneer cannot guarantee the proper function of an Exit Device that has gone through any type of modification.

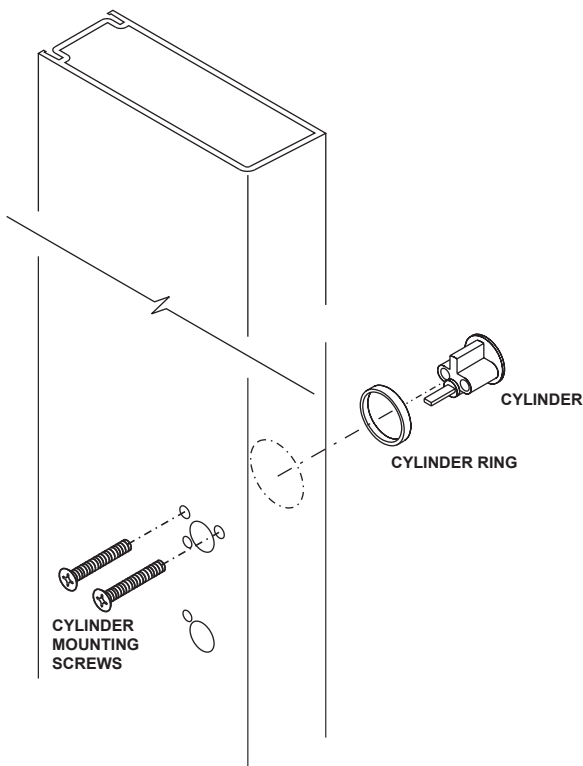


### RIM EXIT DEVICE LOCATION



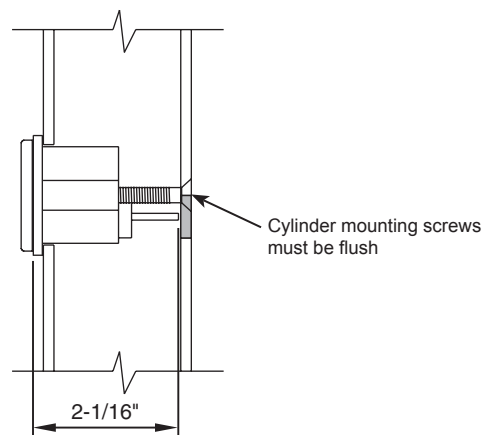
### CYLINDER INSTALLATION

Cylinder must be installed before exit device.  
Insert cylinder with cylinder ring into the door stile and secure in place with cylinder mounting screws.



### INSTALLING CYLINDERS BY OTHERS

Cut tailpiece to correct length and install.  
(Mounting screw heads must be flush with door surface.)

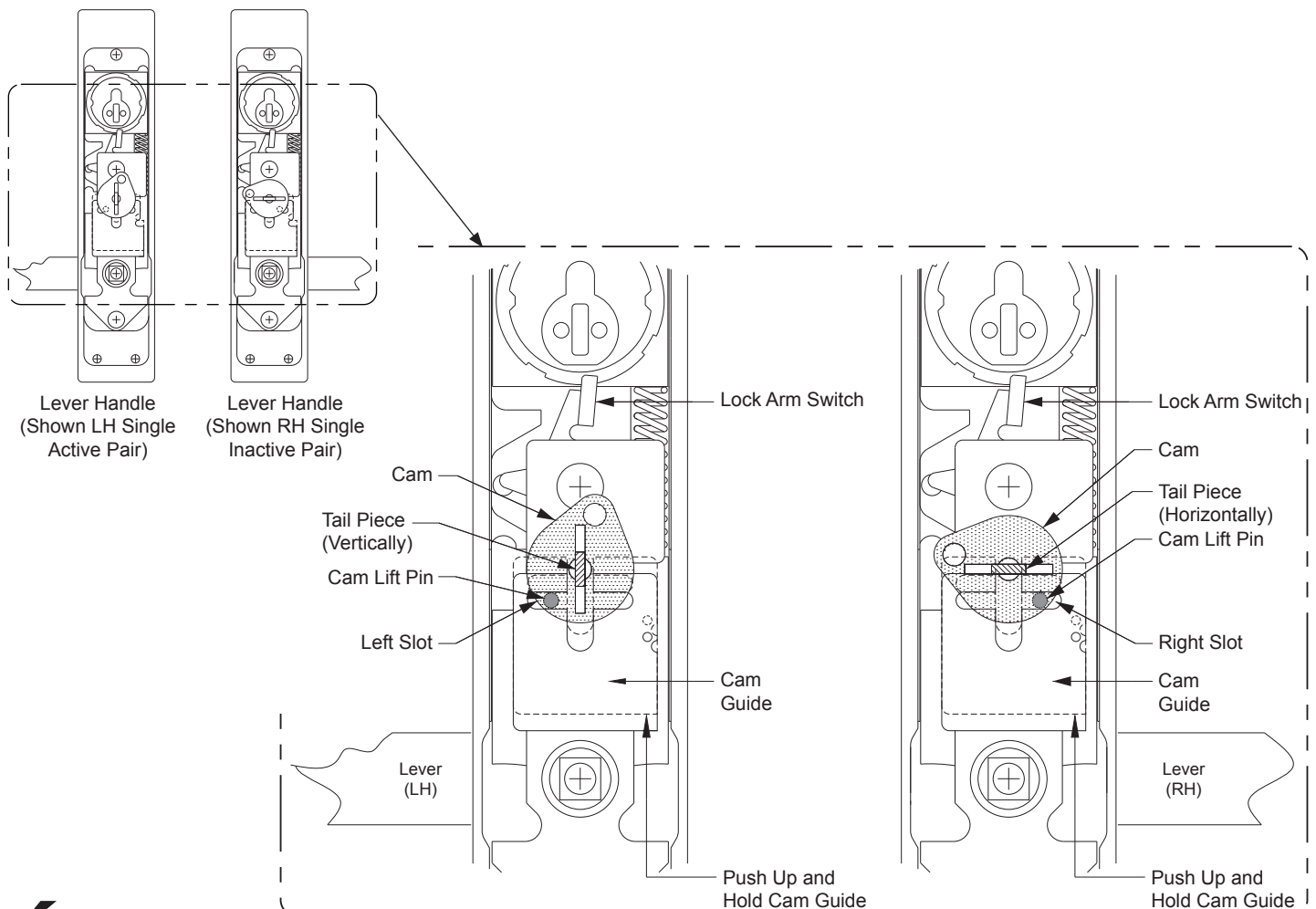


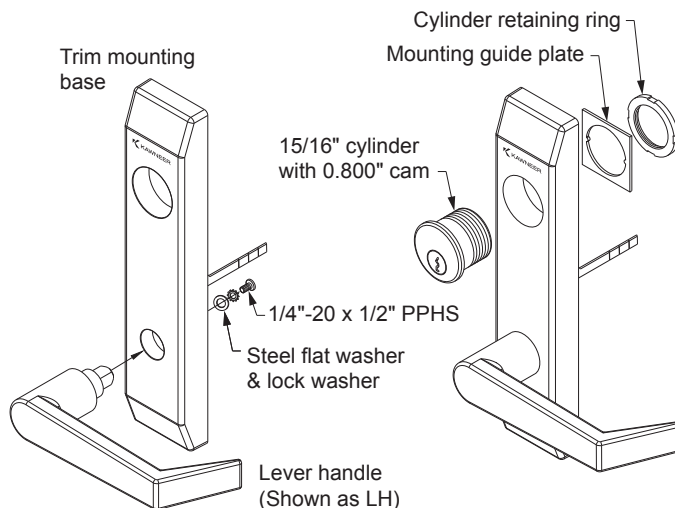
Laws and building and safety codes governing the design and use of glazed entrance, window, and curtain wall products vary widely. Kawneer does not control the selection of product configurations, operating hardware, or glazing materials, and assumes no responsibility therefor.

Kawneer reserves the right to change configuration without prior notice when deemed necessary for product improvement.  
© Kawneer Company, Inc., 2013

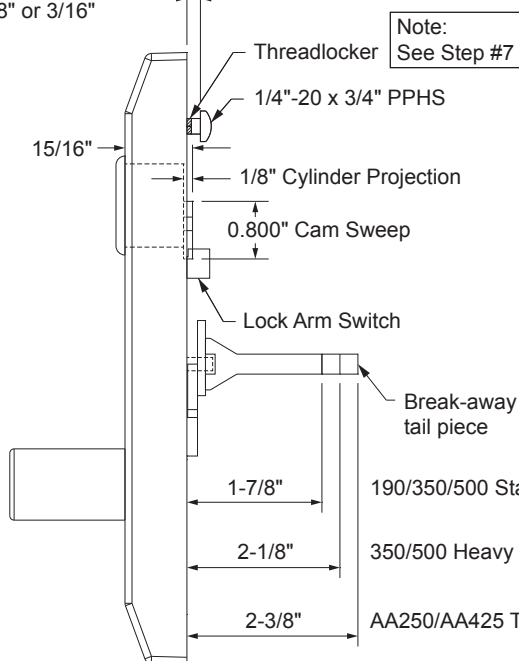
**OPTIONAL TRIM****1786 RIM EXIT DEVICE LEVER HANDLE TRIM ASSEMBLY/INSTALLATION INSTRUCTIONS:**

- 1) Trim mounting base is handed to accommodate a left or right handle application. To construct a left hand (LH) lever handle, rotate cam clockwise making sure the cam pin aligns with slot on left side of cam guide. (See Illustration below) Once the pin is in position, slightly push up and hold cam guide and cam while inserting lever handle firmly into place within the trim mounting base. The tail piece will now be oriented in the vertical position.
- 2) To construct a right hand (RH) lever handle, rotate cam counter clockwise making sure the cam pin aligns with slot on right side of cam guide. (See Illustration below) Once the pin is in position, slightly push up and hold cam guide and cam while inserting lever handle firmly into place within the trim mounting base. The tail piece will now be oriented in the vertical position.
- 3) Assemble (1) 1/4" -20 x 1/2" Phillips pan head fastener with (1) steel flat washer and (1) lock washer to secure lever handle to trim mounting base.
- 4) Insert 15/16" key cylinder (dummy cylinder on inactive door leaf) into top hole of trim mounting base. Align mounting guide plate to key cylinder and secure with retaining ring.
- 5) When using a key cylinder longer than 15/16", cylinder rings will be required to maintain a 1/8" cylinder projection. When using a dummy cylinder on inactive door leafs, place the lock arm switch in a lock position to disable the lever handle function.
- 6) Before installation of trim mounting base, cut break-away tail piece to the correct length. (see illustration)ation.
- 7) Find (1) 1/4"-20 x 3/4" Phillips pan head fastener and apply several drops of thread locker liquid to lower threads. Install Phillips pan head fastener into trim mounting base and set to accommodate a 1/8" (Standard/Thermal door) or 3/16" (Heavy Wall) wall thickness. (Fastener may require additional adjustment to ensure that trim mounting base is fully secured into position.)
- 8) On exterior side of door stile, position lever handle trim assemble into cutout, just below the fastener slot cutout. Being careful not to scratch the exposed finish surface, slide lever handle trim assemble up to engage fastener into slot.
- 9) On interior side of door stile, install (1) fastener (see below) through door to secure lever handle trim assembly in position.
  - (1) #10-24 x 2 1/4" FHMS for Standard 1-3/4" doors
  - (1) #10-24 x 2-1/2" FHMS for Heavy Wall 2" doors
  - (1) #10-24 x 2-3/4" FHMS for Thermal 2-1/4" doors
- 10) Lever handle trim assemble should be tightly secured to ensure that hardware is placed square upon door stile and cannot be moved.
- 11) Upon completion, insert cylinder key and turn clockwise to unlock, then counter- clockwise to lock.
- 12) Install rim exit device.

**1786 RIM EXIT DEVICE TRIM HANDING GUIDE:**



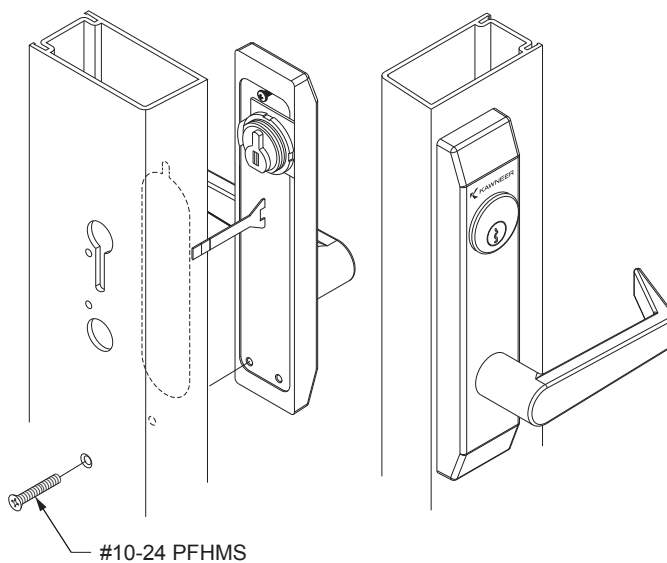
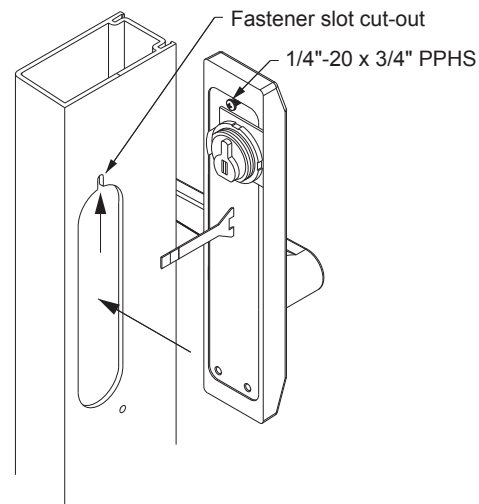
Non. Wall Thickness  
1/8" or 3/16"



190/350/500 Standard Door (1-3/4") [with 2-1/4" fastener]

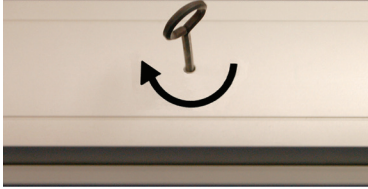
350/500 Heavy Wall Door (2") [with 2-1/2" fastener]

AA250/AA425 Thermal Door (2-1/4") [with 2-3/4" fastener]



**EXIT DEVICE WITH PUSH PAD DOGGING****TO DOG EXIT DEVICE**

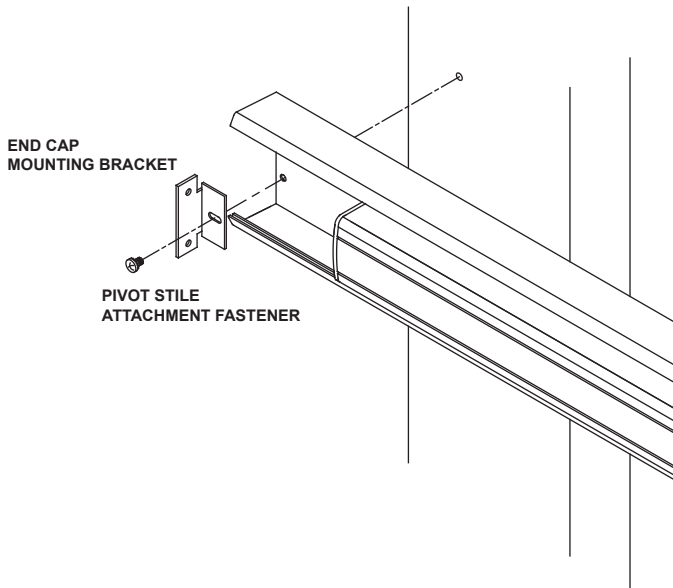
Insert the hex key and turn clockwise until it stops.  
Fully depress touch bar and release the key.  
With touch bar retracted remove hex key.

**TO UNDOG EXIT DEVICE**

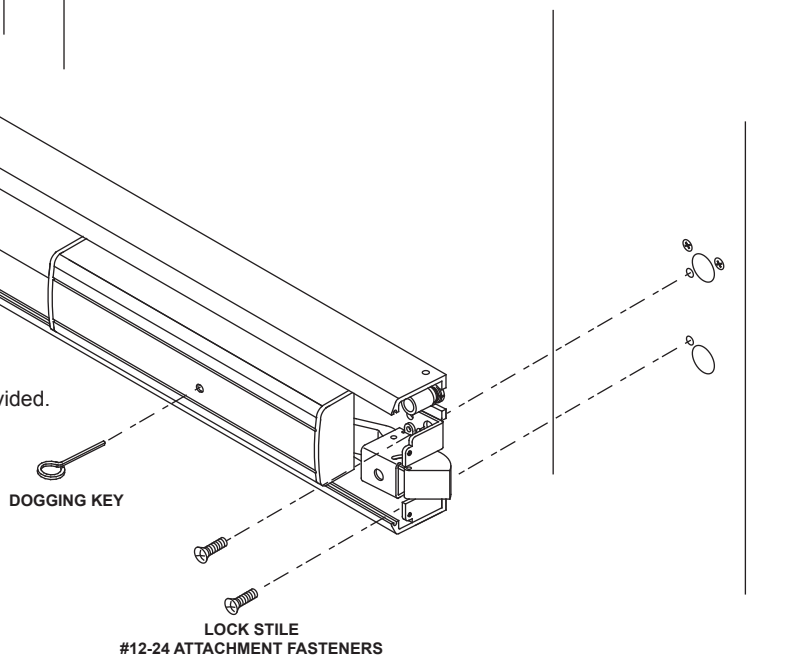
Push on touch bar. Insert hex key and turn clockwise until it stops. Release touch bar, when the touch bar is in the extended position release hex key and remove.

**RIM EXIT DEVICE ATTACHMENT (Push Pad Dogging or Cylinder Dogging)**

- 1) Undog exit device.
- 2) Install exit device onto door stiles as indicated below.
- 3) Attach exit device to pivot stile with mounting bracket and fastener provided.



- 4) Attach exit device to lock stile with fasteners provided.

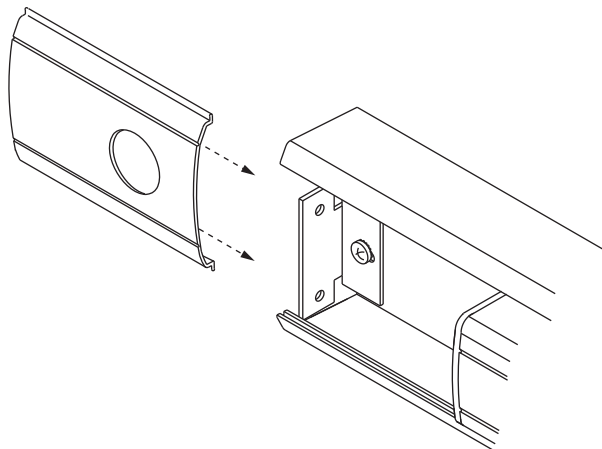


Laws and building and safety codes governing the design and use of glazed entrance, window, and curtain wall products vary widely. Kawneer does not control the selection of product configurations, operating hardware, or glazing materials, and assumes no responsibility therefor.

Kawneer reserves the right to change configuration without prior notice when deemed necessary for product improvement.  
© Kawneer Company, Inc., 2013

## EXIT DEVICE WITH CYLINDER DOGGING

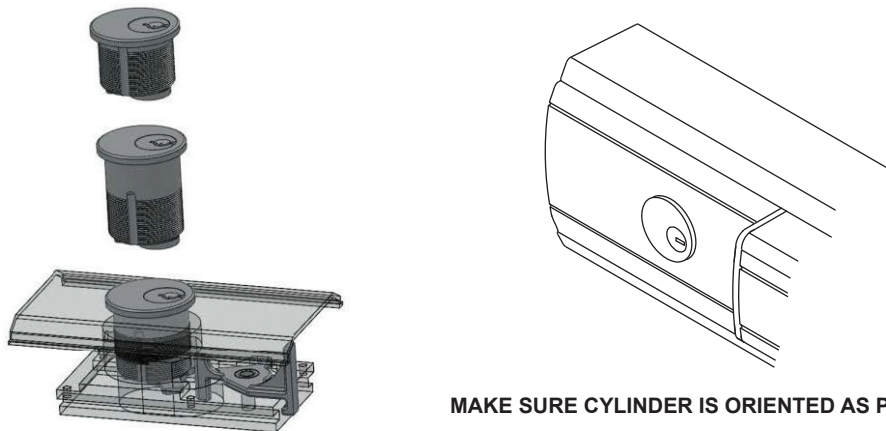
- 1) Install pivot stile filler plate into exit device.



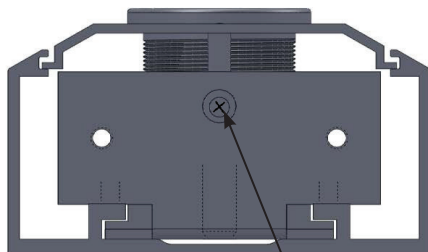
- 2) Install cylinder as pictured, making sure cylinder is tight against filler plate.

Cylinder dogging will use a 15/16" long cylinder with 0.800 cam sweep. Utilizing longer cylinders will require a trim ring to obtain the appropriate projection. Care must be taken to use the specified cam tail piece to accommodate this cylinder dogging device. It is advisable not to attempt using a manufacture's cylinder with another's cam. This cam shape is available from the list of manufacturers below.

**Cam available from:** Adams Rite, Arrow, ASSA, Best, Corbin Russwin, Falcon, Medeco, Sargent, Schlage and Yale.



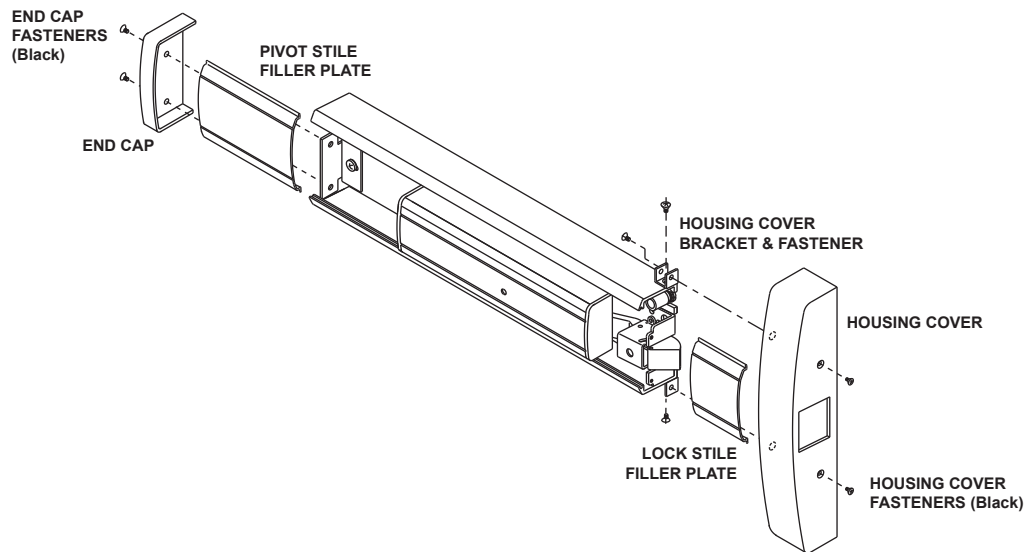
- 3) Tighten set screw in dogging mechanism with a phillips head screw driver, through hole in end of base bracket.



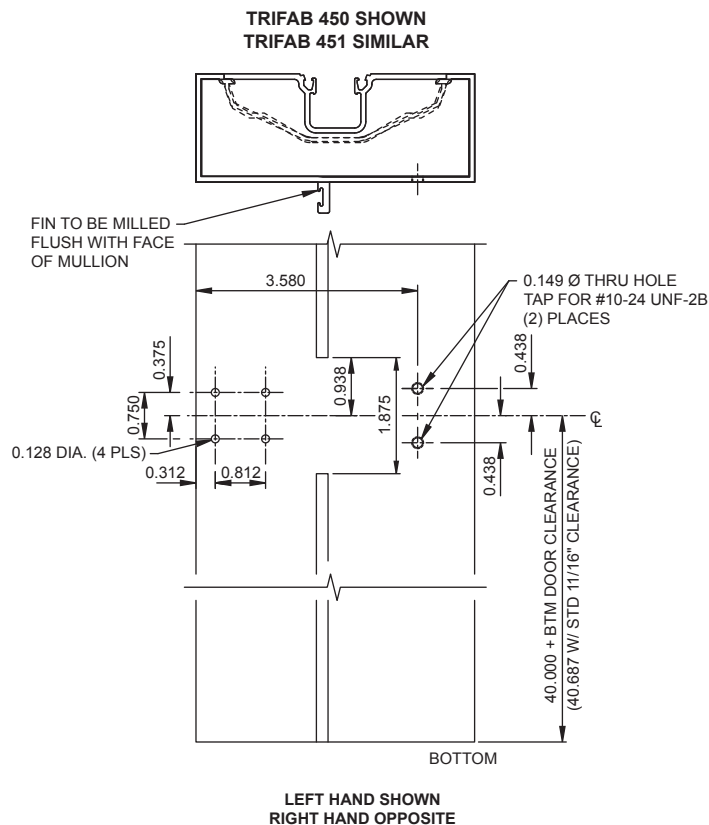
DO NOT OVER TIGHTEN SET SCREW

**FINAL ASSEMBLY**

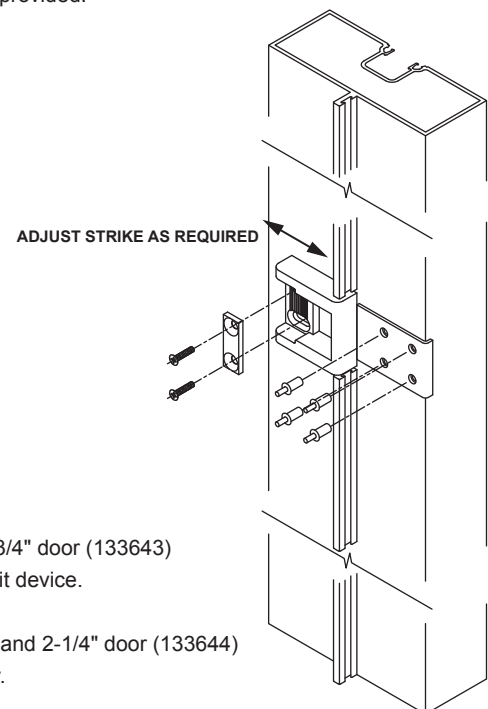
- 1) Slide pivot stile filler plate into exit device and attach pivot stile end cap with fasteners provided.  
(Filler plate with cylinder dogging has been installed previously)
- 2) Slide lock stile filler plate into exit device.
- 3) Install housing cover brackets onto top and bottom of exit device with fasteners provided.
- 4) Install housing cover over brackets and attach with (Black) fasteners provided.

**STRIKE INSTALLATION AND ADJUSTMENT**

- 1) Prep door jamb for strike as shown below.



- 2) Attach strike to door jamb with fasteners provided.
- 3) Close door and adjust strike as required to hold door tight against weathering.
- 4) Attach stainless steel rub plate with (4) 1/8" drive rivets provided.

**NOTE:**

Rub plate for 1-3/4" door (133643) included with exit device.

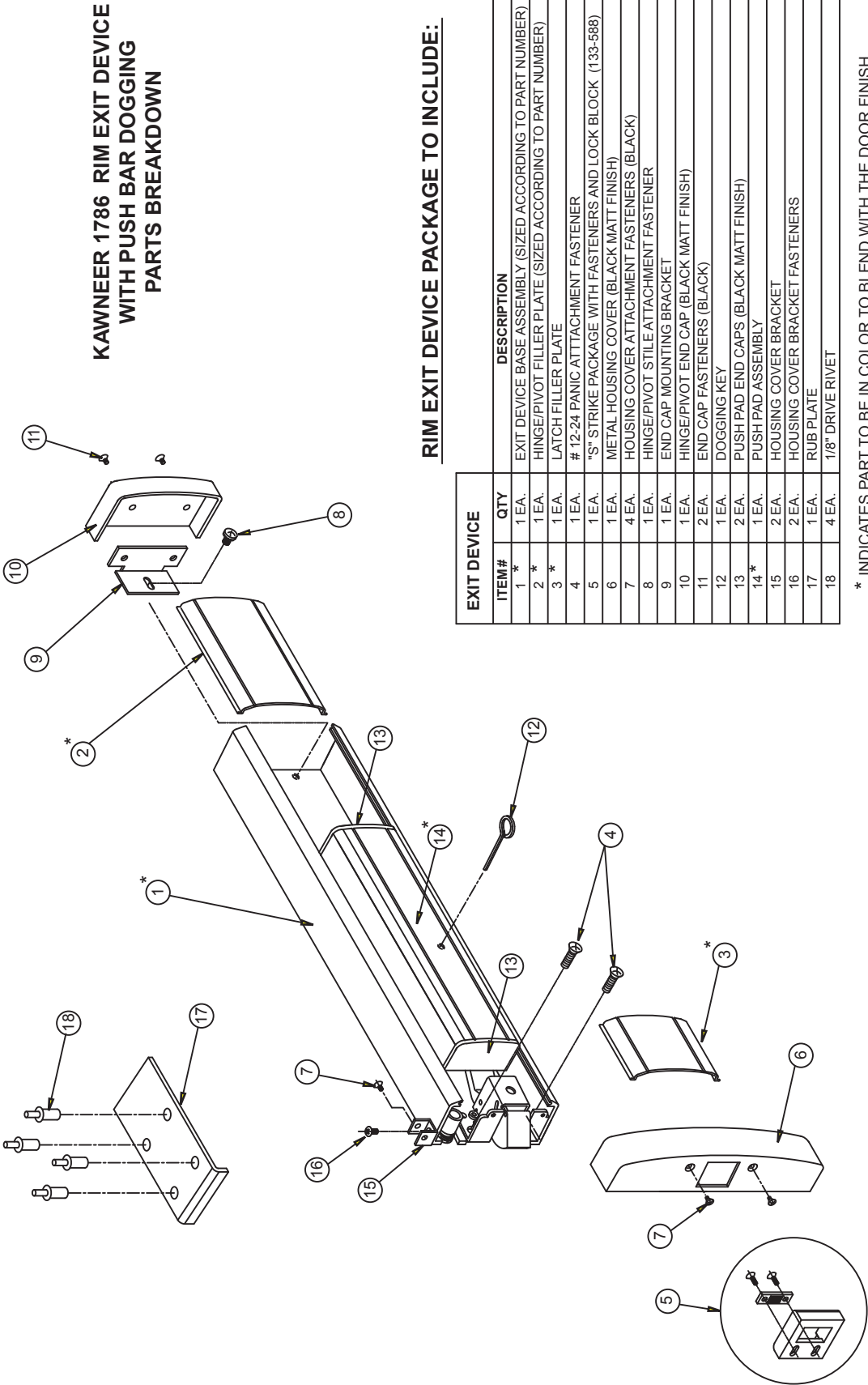
Rub plate for 2" and 2-1/4" door (133644) order separately.

Laws and building and safety codes governing the design and use of glazed entrance, window, and curtain wall products vary widely. Kawneer does not control the selection of product configurations, operating hardware, or glazing materials, and assumes no responsibility therefor.

Kawneer reserves the right to change configuration without prior notice when deemed necessary for product improvement.  
© Kawneer Company, Inc., 2013

Laws and building and safety codes governing the design and use of glazed entrance, window, and curtain wall products vary widely. Kawneer does not control the selection of product configurations, operating hardware, or glazing materials, and assumes no responsibility therefor.

Kawneer reserves the right to change configuration without prior notice when deemed necessary for product improvement.  
© Kawneer Company, Inc., 2013

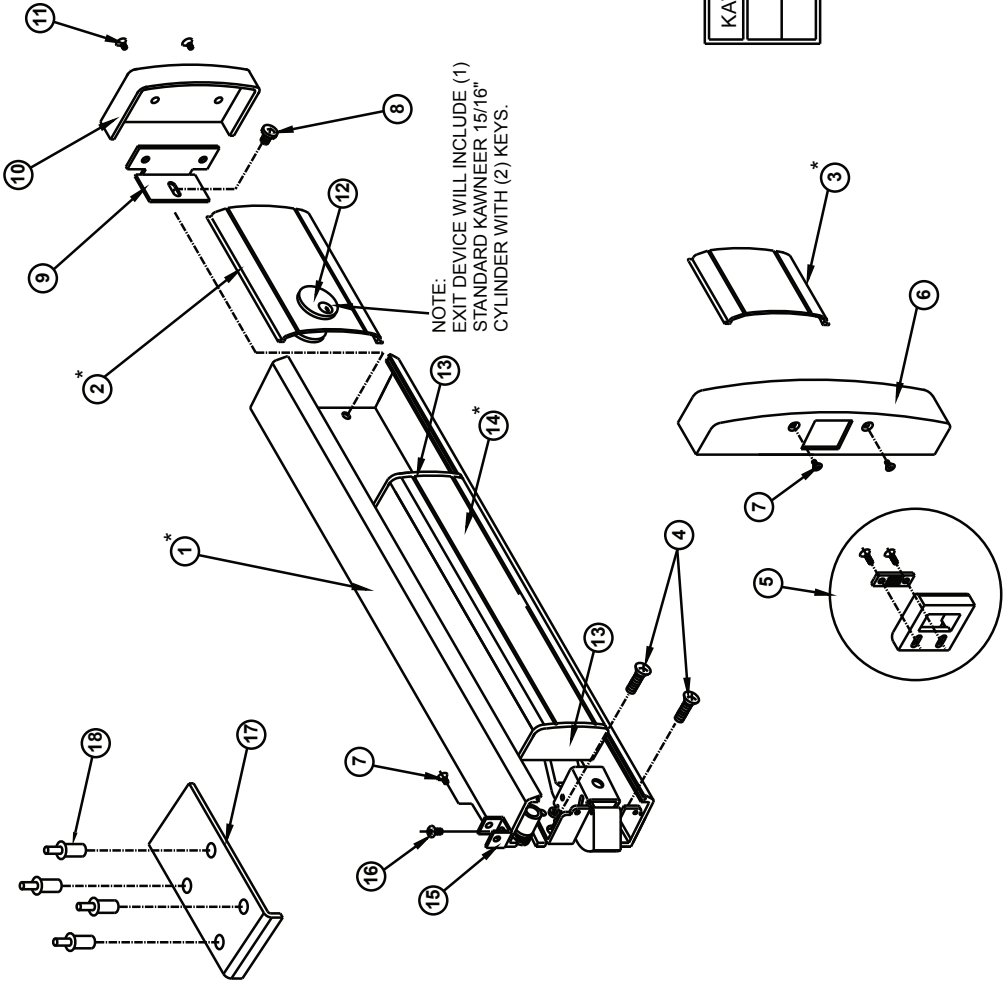


TOUCHBAR RIM EXIT DEVICE		
133580	3'-0"	NON HANDED
133581	3'-6"	NON HANDED
133582	4'-0"	NON HANDED

KAWNEER FINISH	MANUFACTURER FINISH	
17 CLEAR	US28/628	
40 BRONZE	DBZ 313	



KAWNEER 1786 RIM EXIT DEVICE  
WITH CYLINDER DOGGING  
PARTS BREAKDOWN



RIM EXIT DEVICE PACKAGE TO INCLUDE:

EXIT DEVICE		DESCRIPTION
ITEM #	QTY	
1 *	1 EA.	EXIT DEVICE BASE ASSEMBLY (SIZED ACCORDING TO PART NUMBER)
2 *	1 EA.	HINGEPIVOT FILLER PLATE (SIZED ACCORDING TO PART NUMBER)
3 *	1 EA.	LATCH FILLER PLATE
4	1 EA.	# 12-24 PANIC ATTACHMENT FASTENER
5	1 EA.	"S" STRIKE PACKAGE WITH FASTENERS AND LOCK BLOCK (133588)
6	1 EA.	METAL HOUSING COVER (BLACK MATT FINISH)
7	4 EA.	HOUSING COVER ATTACHMENT FASTENERS (BLACK)
8	1 EA.	HINGEPIVOT STILE ATTACHMENT FASTENER
9	1 EA.	END CAP MOUNTING BRACKET
10	1 EA.	HINGEPIVOT END CAP (BLACK MATT FINISH)
11	2 EA.	END CAP FASTENERS (BLACK)
12	1 EA.	CYLINDER WITH (2) KEYS INCLUDES CYLINDER DOGGING KIT
13	2 EA.	PUSH PAD END CAPS (BLACK MATT FINISH)
14 *	1 EA.	PUSH PAD ASSEMBLY
15	2 EA.	HOUSING COVER BRACKET
16	2 EA.	HOUSING COVER BRACKET FASTENERS
17	1 EA.	RUB PLATE
18	4 EA.	1/8" DRIVE RIVET

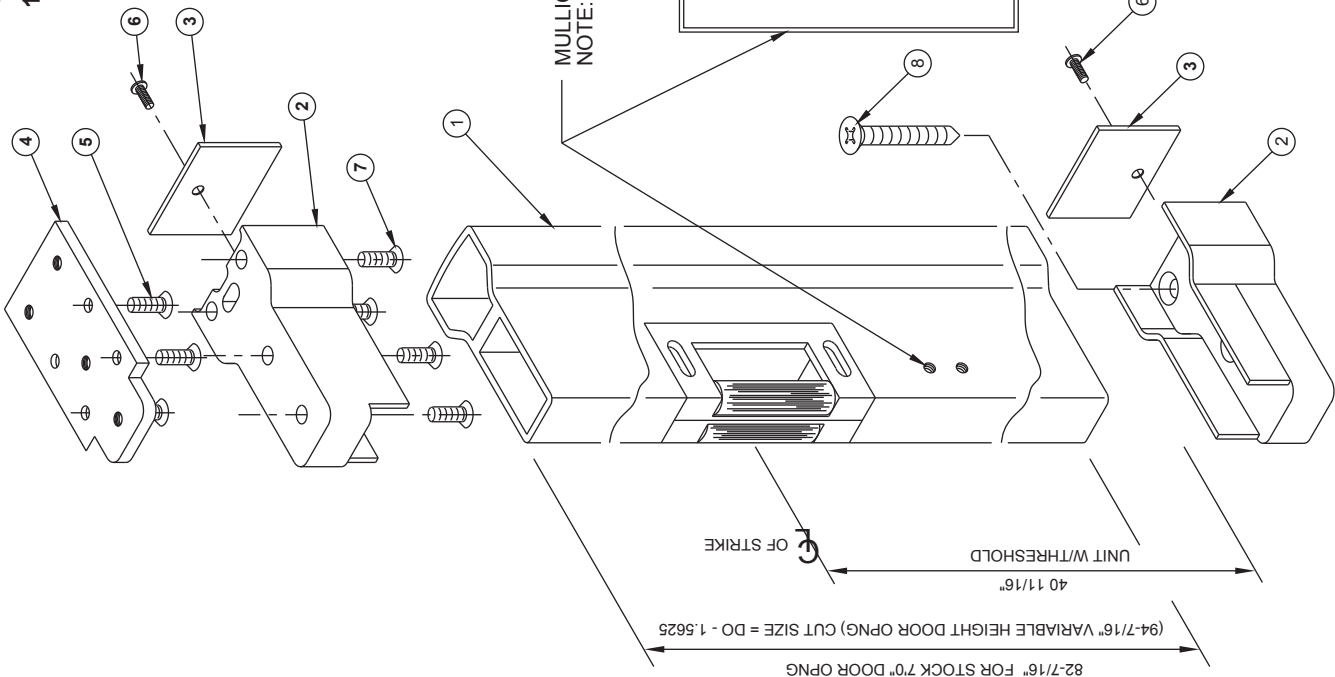
\* INDICATES PART TO BE IN COLOR TO BLEND WITH THE DOOR FINISH

KAWNEER FINISH		MANUFACTURER FINISH
17 CLEAR		US28/628
40 BRONZE		DBZ 313

TOUCHBAR RIM EXIT DEVICE		
133580CD	3'-0"	NON HANDED
133581CD	3'-6"	NON HANDED
133582CD	4'-0"	NON HANDED



133586 STANDARD HEIGHT (7'0" DO or 82-7/16" PART)  
133587 VARIABLE HEIGHT TO (8'0" DO or 94-7/16" PART)

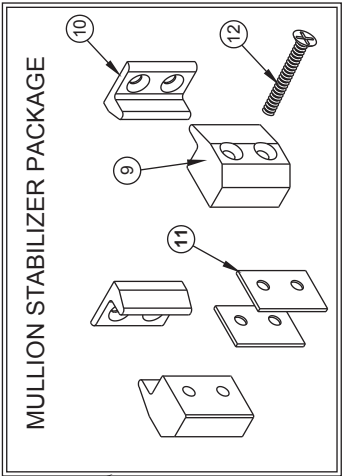


REMOVABLE MULLION PACKAGE TO INCLUDE:

EXIT DEVICE		DESCRIPTION
ITEM #	QTY	
1*	1 EA.	VERTICAL MULLION (SIZED ACCORDING TO PART NUMBER)
2*	2 EA.	SHOE MULLION
3*	2 EA.	BACK PLATE FOR SHOE MULLION
4*	1 EA.	SHOE MULLION MOUNTING PLATE
5	4 EA.	#14 x 1-1/2" FHTF - FASTENERS FOR UPPER SHOE MOUNTING PLATE TO HEAD
6	2 EA.	1/4-20 x 7/8" OHMS - BACK PLATE ATTACHMENT FASTENERS
7	4 EA.	1/4-20 x 3/4" FHMS - FASTENERS FOR UPPER SHOE TO PLATE
8	4 EA.	1/4-20 x 1-1/8" FHMS W/ANCHORS - FASTENERS FOR LOWER SHOE TO FLOOR
9	2 EA.	MULLION STABILIZERS
10	2 EA.	DOOR STABILIZERS
11	4 EA.	STABILIZER SHIMS
12	8 EA.	#10-24 x 7/8" OHMS - FASTENERS FOR MULLION STABILIZERS

\* INDICATES PART TO BE IN COLOR TO BLEND WITH THE DOOR FINISH

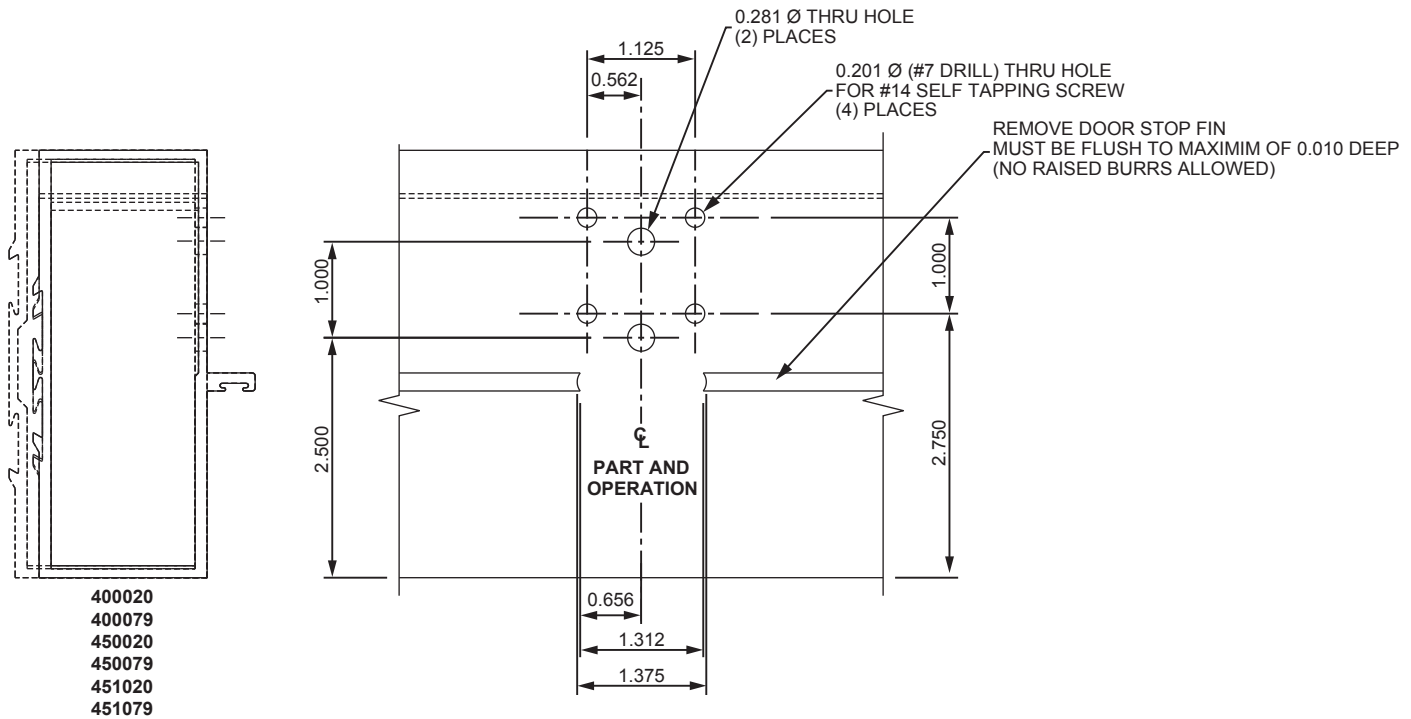
MULLION STABILIZER PREP  
NOTE: STABILIZERS SHIPPED WITH MULLION



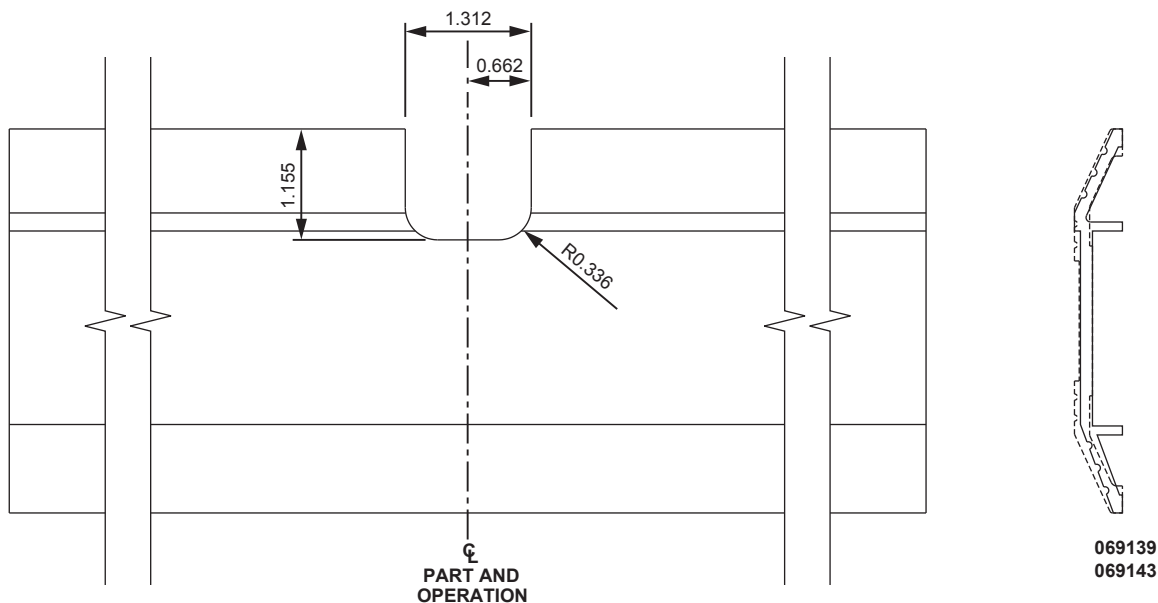
KAWNEER FINISH	MANUFACTURER FINISH
17 CLEAR	US28/628
40 BRONZE	DBZ 313

**REMOVABLE MULLION HEADER/T-BAR PREP**

- 1) Prep Header/T-Bar as shown below.

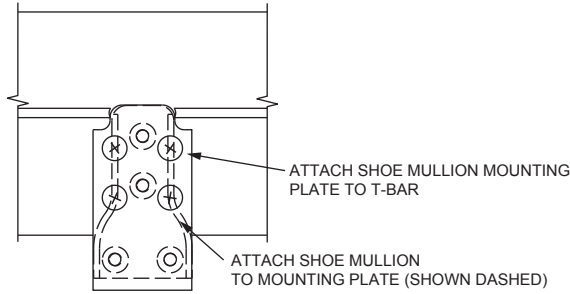
**REMOVABLE MULLION THRESHOLD PREP**

- 1) Field notch threshold as shown below.

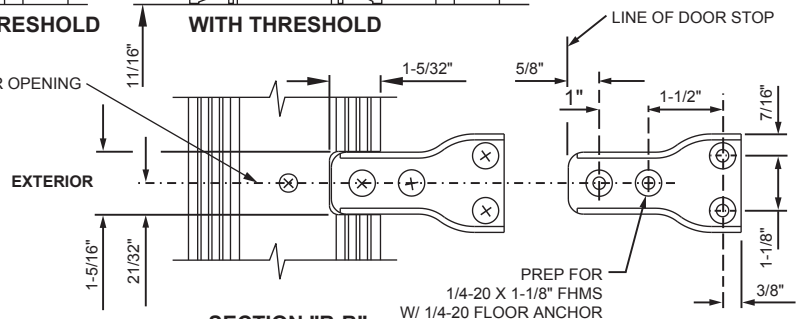
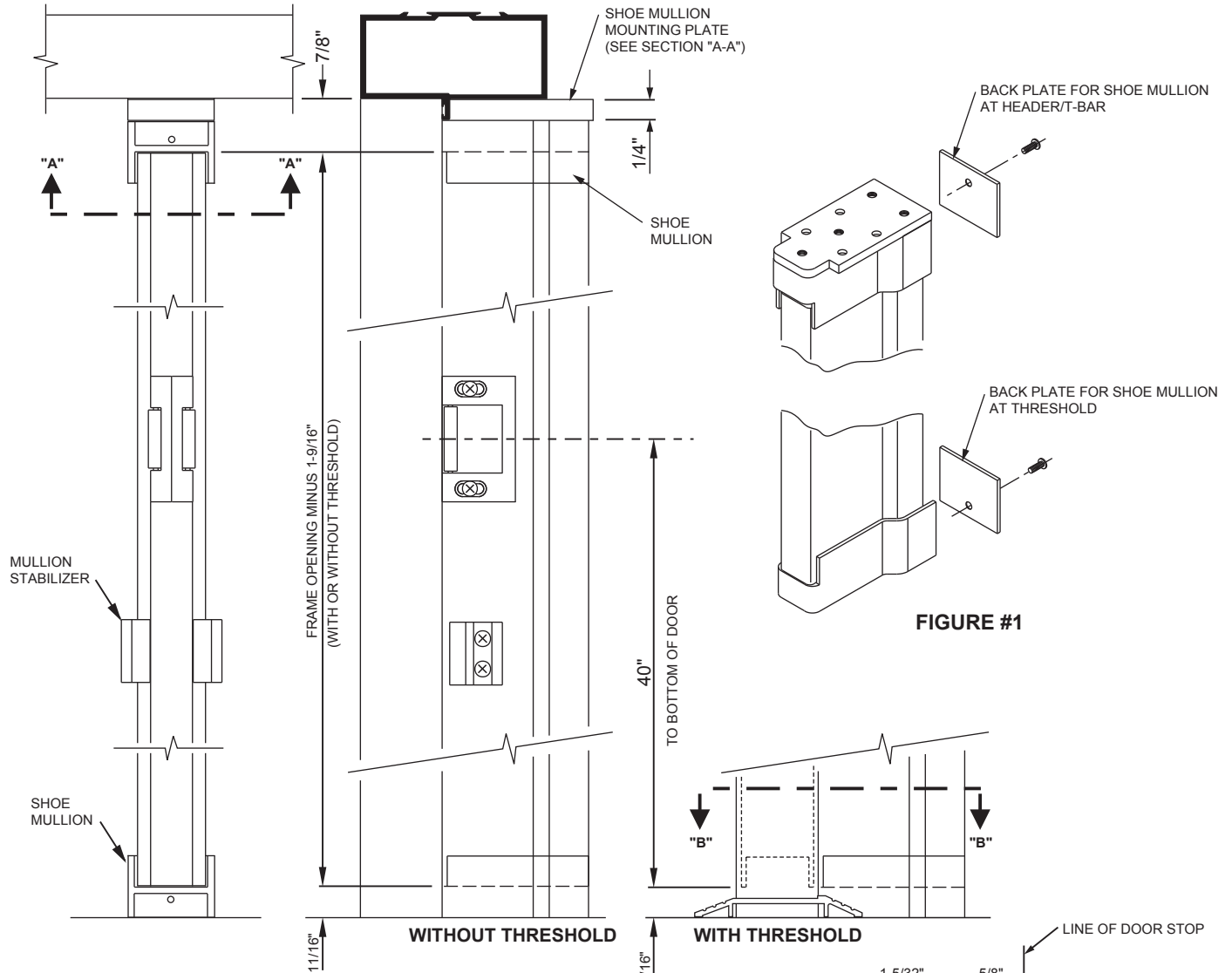


Laws and building and safety codes governing the design and use of glazed entrance, window, and curtain wall products vary widely. Kawneer does not control the selection of product configurations, operating hardware, or glazing materials, and assumes no responsibility therefor.

Kawneer reserves the right to change configuration without prior notice when deemed necessary for product improvement.  
© Kawneer Company, Inc., 2013



**SECTION "A-A"**  
(TOP SHOE MULLION)



**SECTION "B-B"**  
(BOTTOM SHOE MULLION)

### REMOVABLE MULLION INSTALLATION

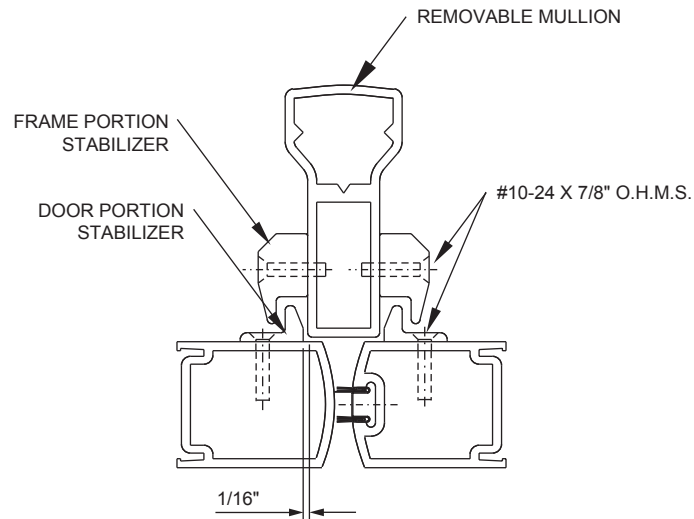
- 1) Attach shoe mullion mounting plate to header/t-bar as shown.
- 2) Attach top shoe mullion to mounting plate on header/t-bar as shown.
- 3) Secure bottom shoe mullion to floor as shown.
- 4) Check removable mullion for correct length from bottom of mullion to centerline of strike.
  - a) Cut mullion to proper overall length if required.
- 5) Slip removable mullion into top shoe mullion, pick up and swing onto bottom shoe mullion.
- 6) Install back plate onto shoe mullion at header/t-bar and threshold. (See Figure #1)

Laws and building and safety codes governing the design and use of glazed entrance, window, and curtain wall products vary widely. Kawneer does not control the selection of product configurations, operating hardware, or glazing materials, and assumes no responsibility therefor.

Kawneer reserves the right to change configuration without prior notice when deemed necessary for product improvement.  
© Kawneer Company, Inc., 2013

**MULLION STABILIZER INSTALLATION**

- 1) Attach frame portion stabilizers in holes provided on mullion with 2 ea. #10-24 x 7/8" O.H.M.S.
- 2) Close door and align door portion on the door, allowing 1/16" for clearance, as shown.
- 3) Mark hole centers, drill and tap for #10-24 in door.
- 4) Attach door portion stabilizers to door with 2 ea. #10-24 x 7/8" O.H.M.S.



Laws and building and safety codes governing the design and use of glazed entrance, window, and curtain wall products vary widely. Kawneer does not control the selection of product configurations, operating hardware, or glazing materials, and assumes no responsibility therefor.

Kawneer reserves the right to change configuration without prior notice when deemed necessary for product improvement.  
© Kawneer Company, Inc., 2013

Laws and building and safety codes governing the design and use of glazed entrance, window, and curtain wall products vary widely. Kawneer does not control the selection of product configurations, operating hardware, or glazing materials, and assumes no responsibility therefor.

Kawneer reserves the right to change configuration without prior notice when deemed necessary for product improvement.  
© Kawneer Company, Inc., 2013

**THIS PAGE LEFT  
INTENTIONALLY  
BLANK**



Kawneer Company, Inc.  
Technology Park/Atlanta  
555 Guthridge Court  
Norcross, GA 30092-3503

Laws and building and safety codes governing the design and use of glazed entrance, window, and curtain wall products vary widely. Kawneer does not control the selection of product configurations, operating hardware, or glazing materials, and assumes no responsibility therefor.

Kawneer reserves the right to change configuration without prior notice when deemed necessary for product improvement.  
© Kawneer Company, Inc., 2013